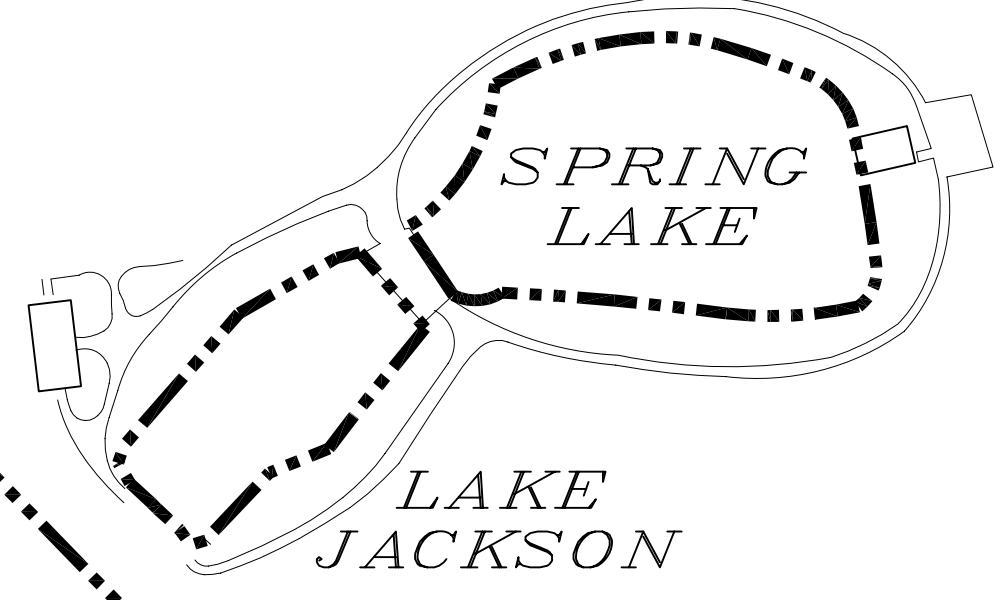
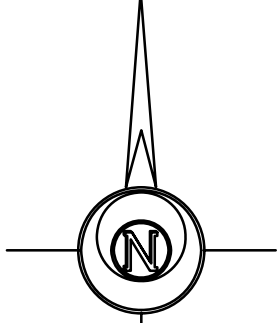


LAKE WATERCRESS

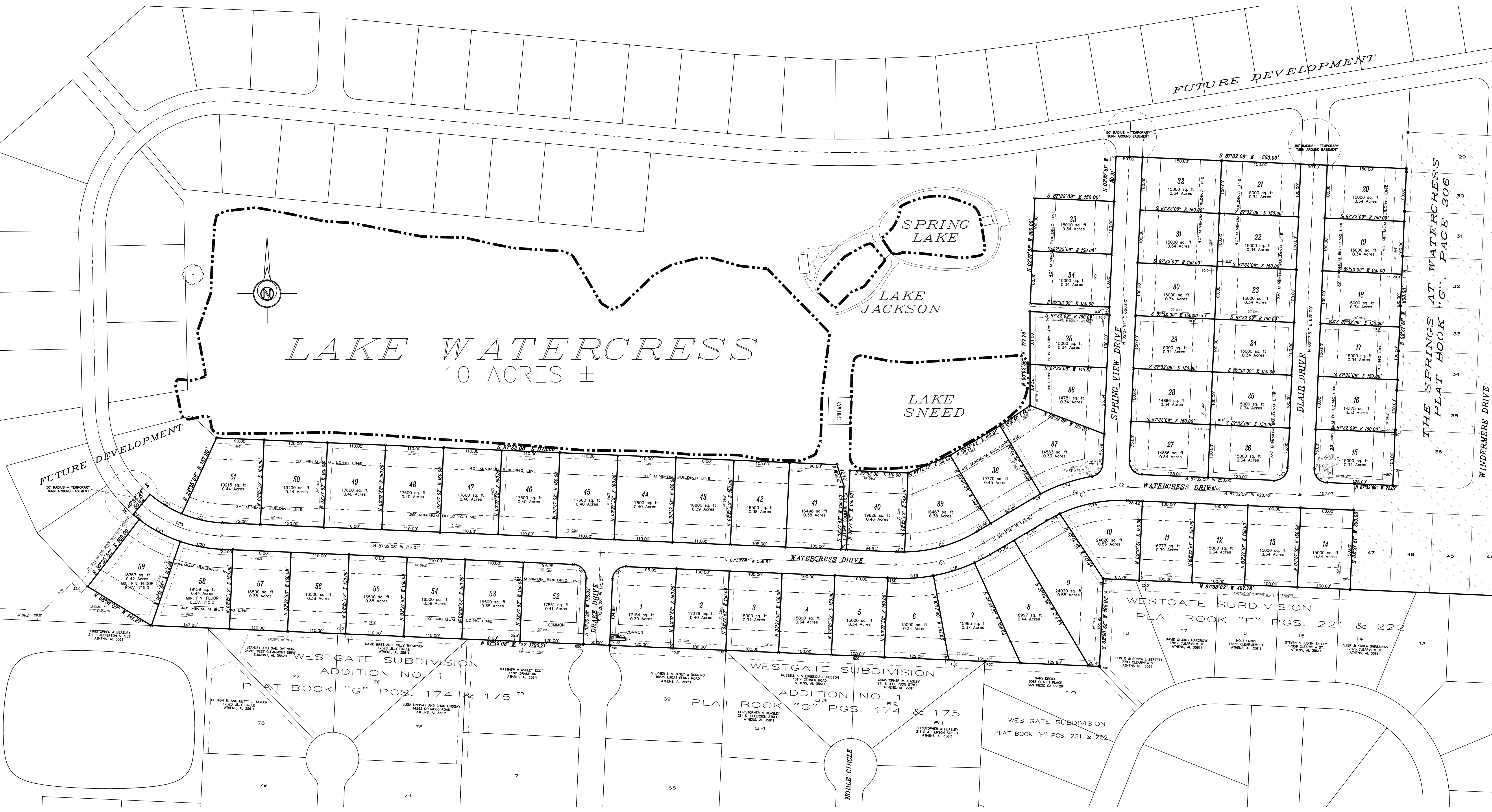
10 ACRES ±



FUTURE DEVELOPMENT

FUTURE DEVELOPMENT

THE SPRINGS AT WATERCRESS
PLAT BOOK "C", PAGE 306



CHRISTOPHER & BEASLEY
211 S. JEFFERSON STREET
ATHENS, AL 35611

WESTGATE SUBDIVISION
ADDITION NO. 1
PLAT BOOK "G" PGS. 174 & 175

WESTGATE SUBDIVISION
ADDITION NO. 1
PLAT BOOK "G" PGS. 174 & 175

WESTGATE SUBDIVISION
PLAT BOOK "F" PGS. 221 & 222

WESTGATE SUBDIVISION
PLAT BOOK "F" PGS. 221 & 222

NOBLE CIRCLE